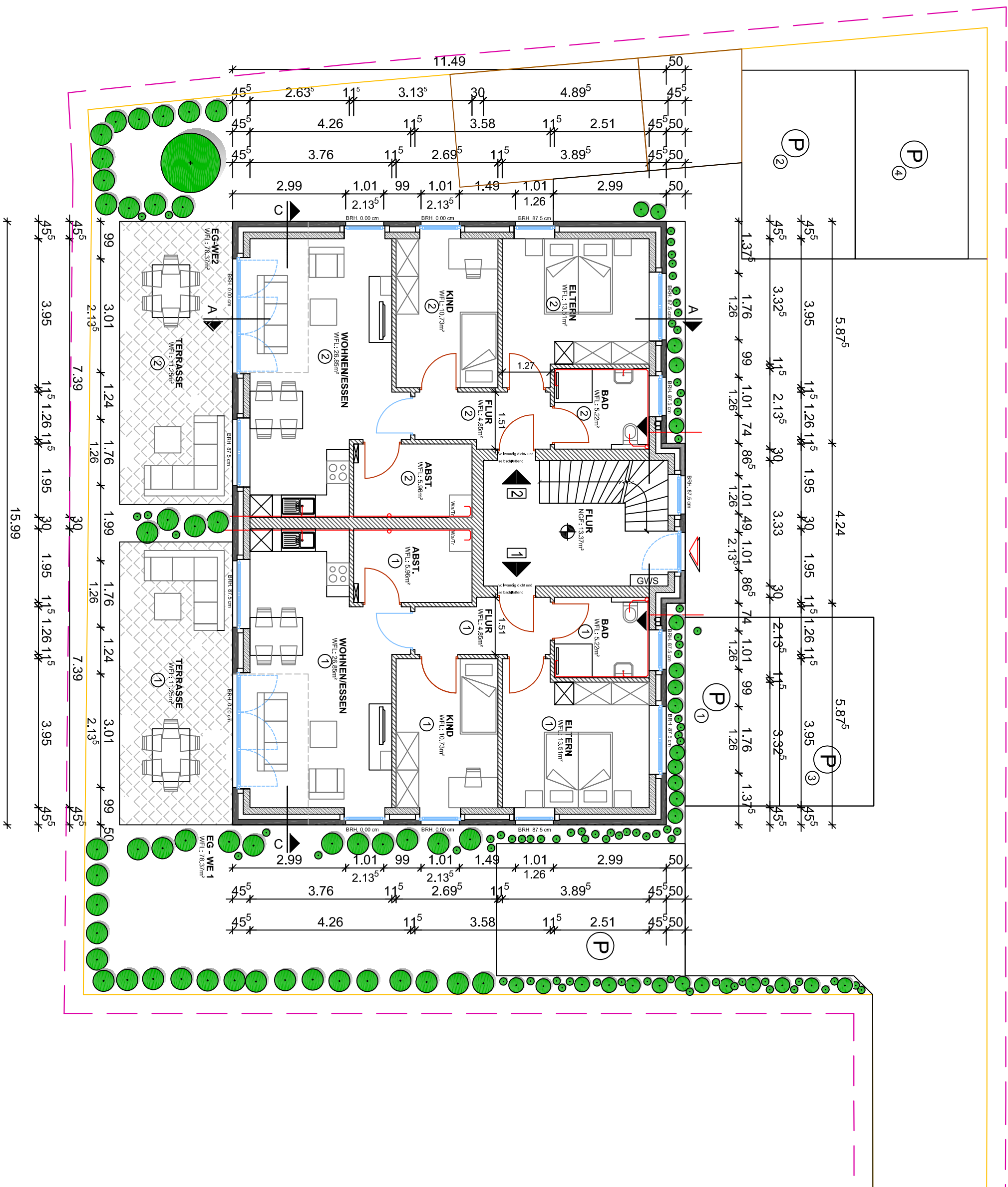
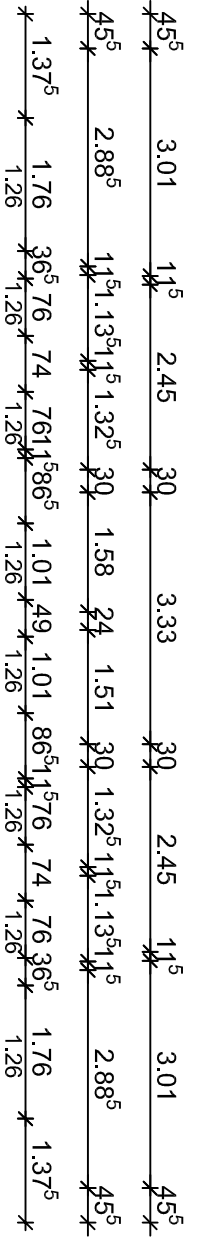
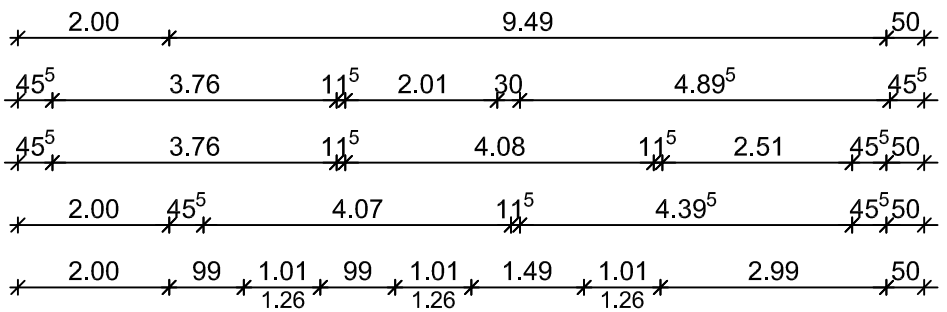
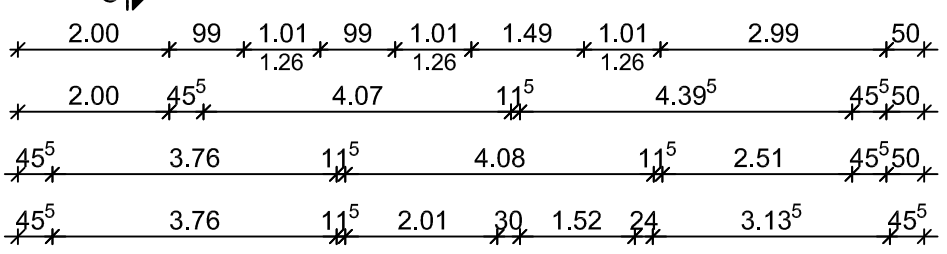
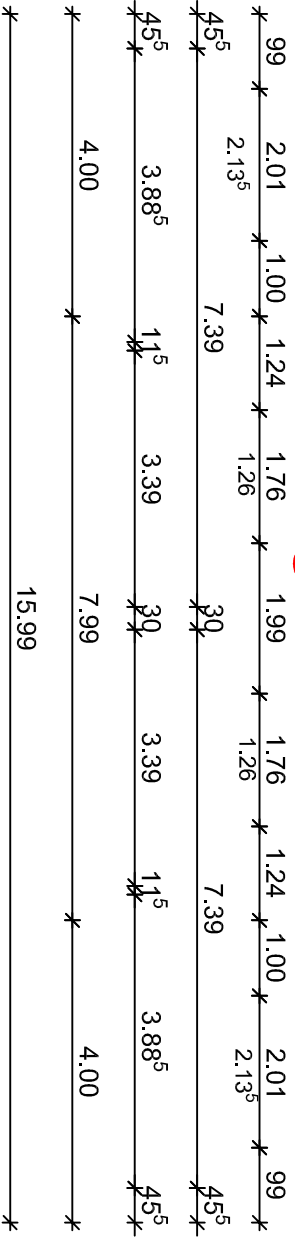
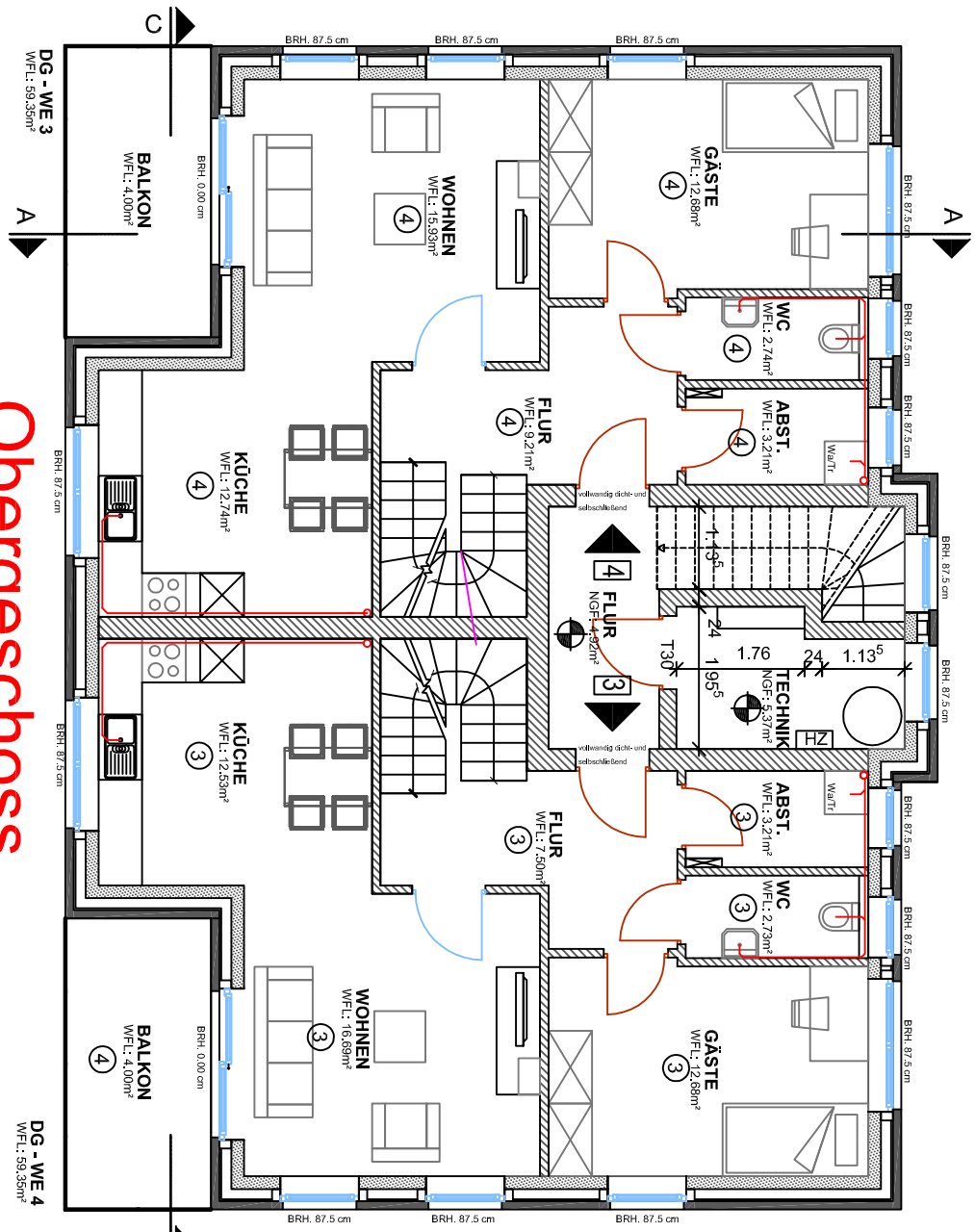


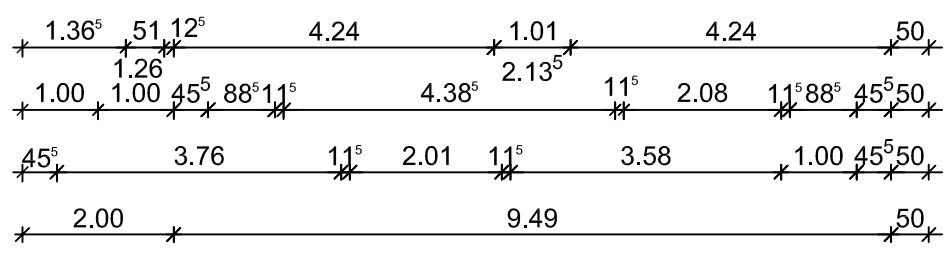
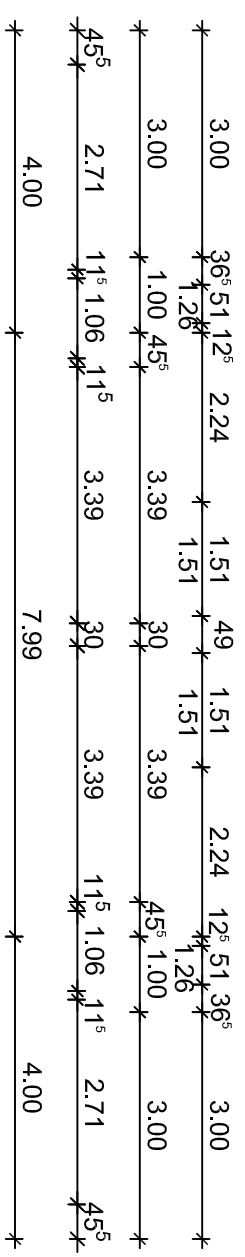
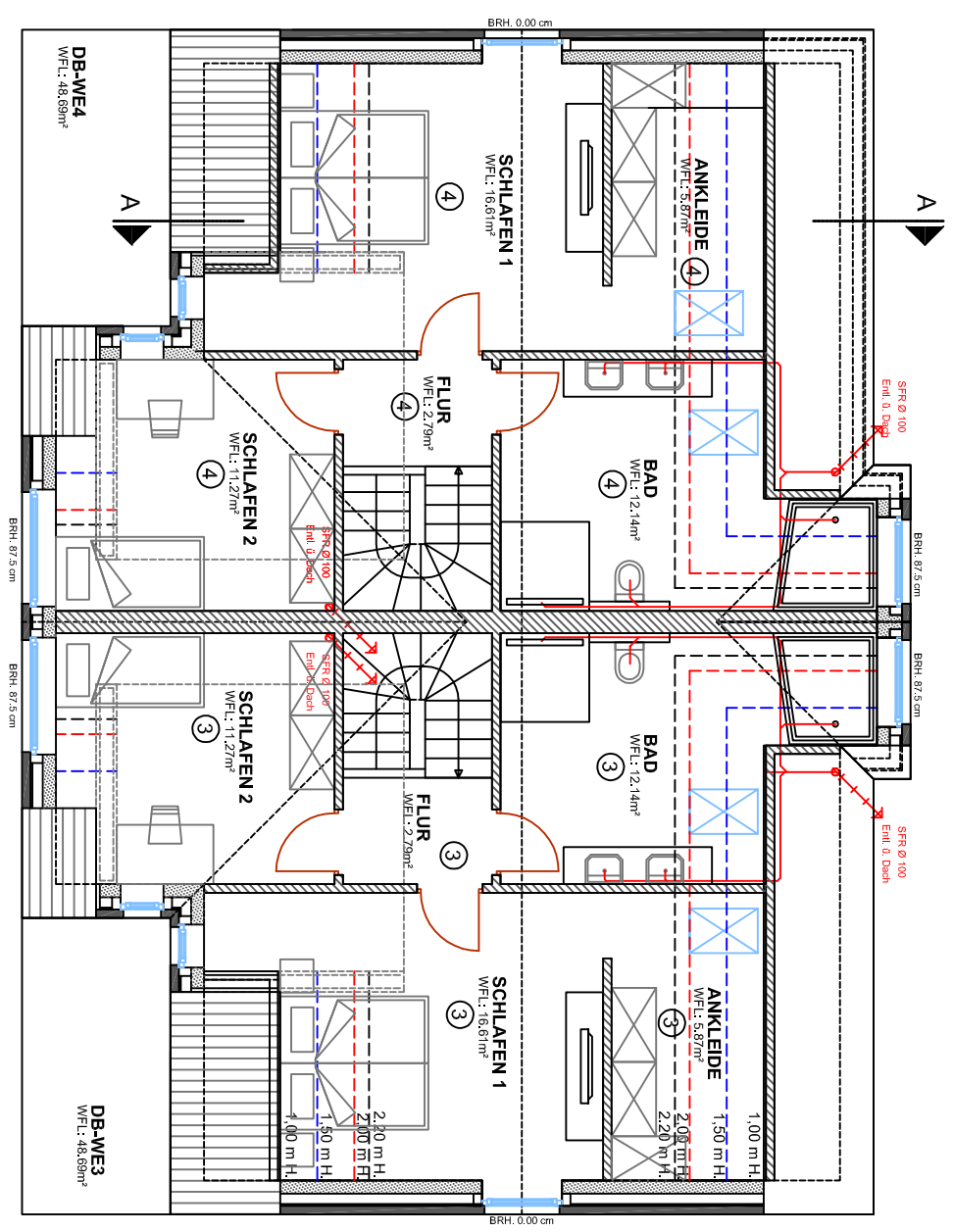
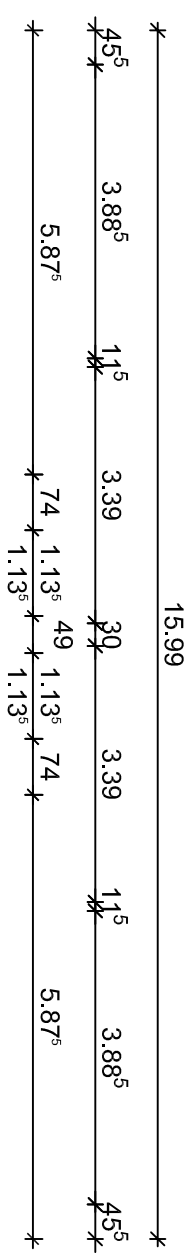
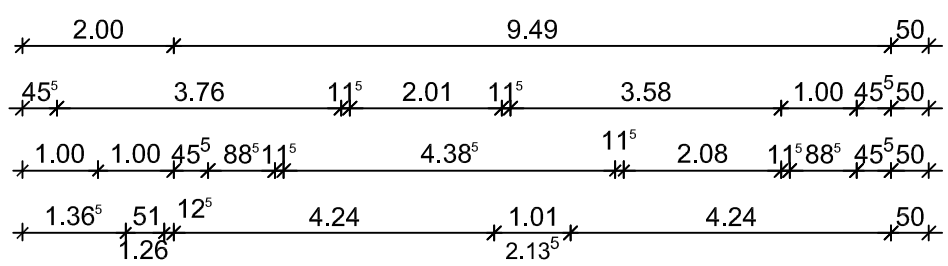
Erdgeschoss



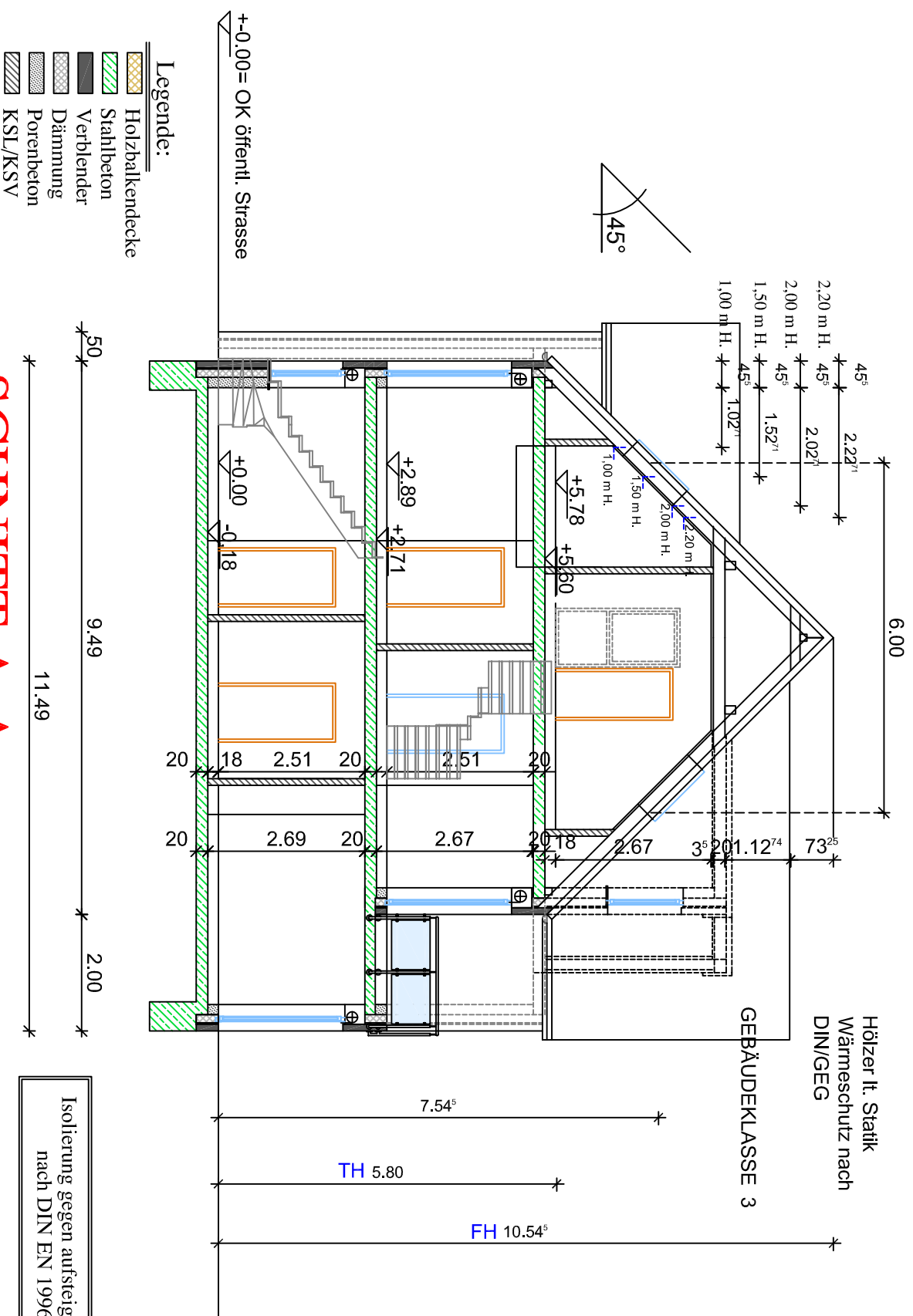


Obergeschoss

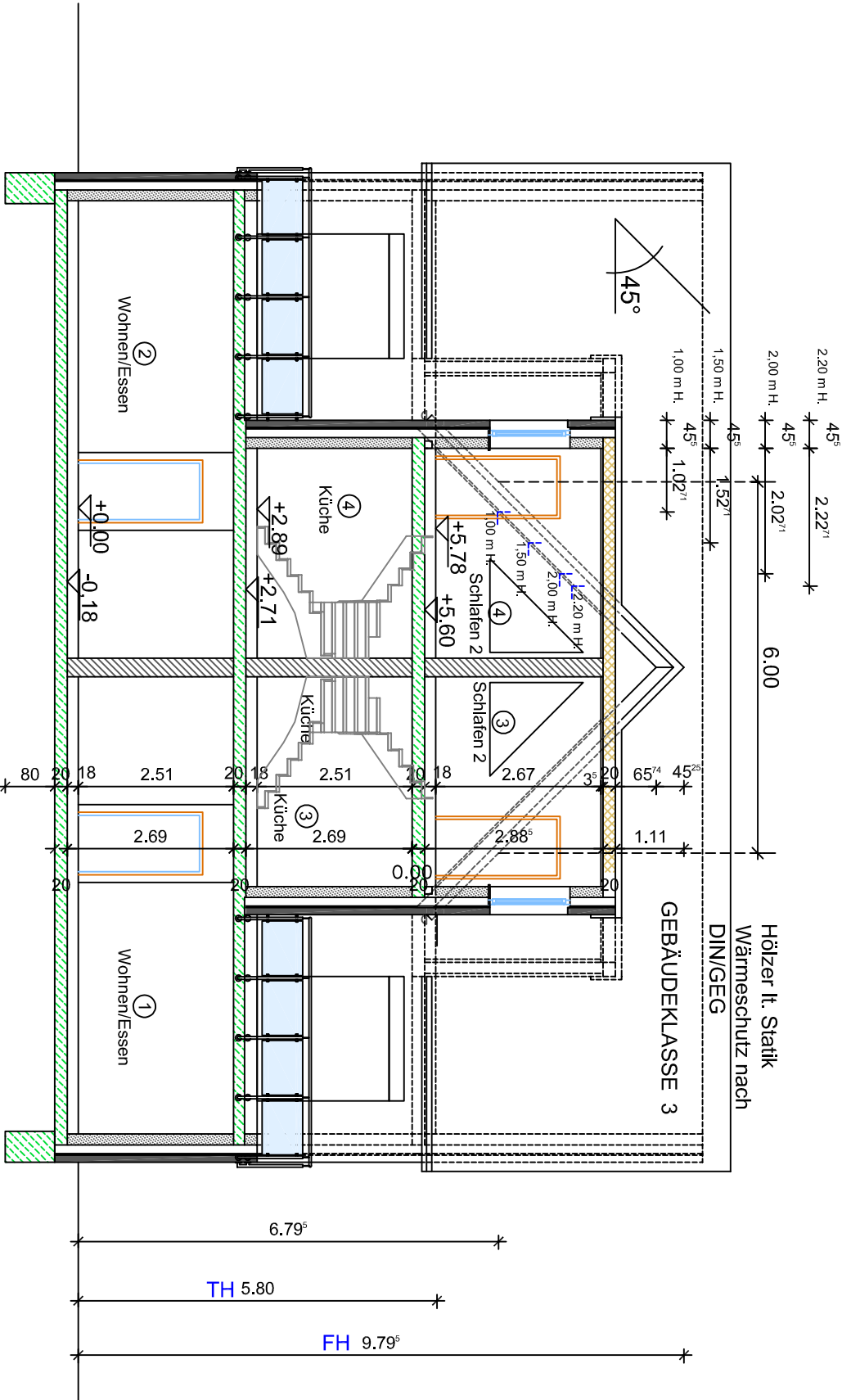




Dachgeschoss



SCHNITT A-A



Legende:

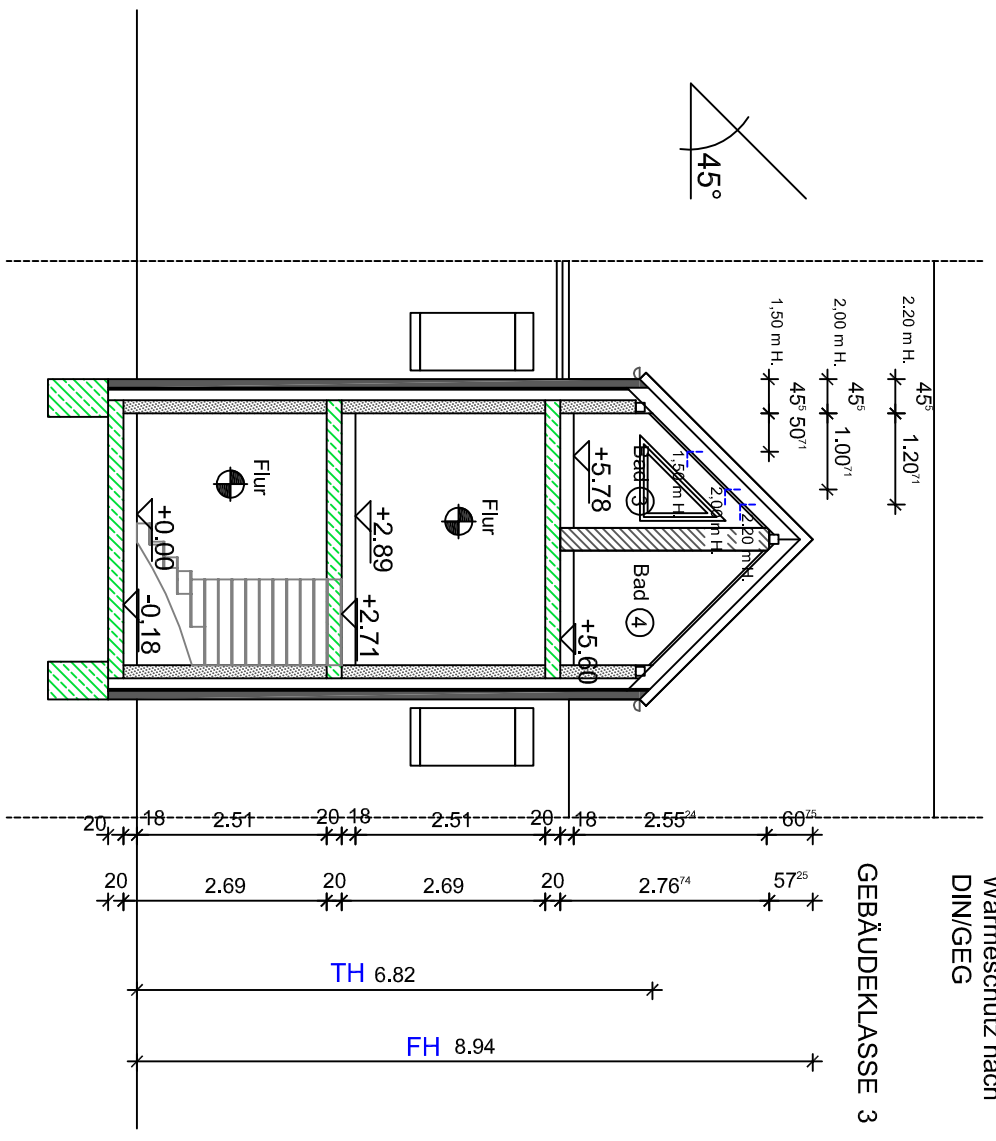
- Holz balkendecke
- Stahlbeton
- Verblender
- Dämmung
- Porenbeton
- KSL/KSV

SCHNITT B-B

Isolierung gegen aufsteigende Feuchtigkeit
nach DIN EN 1996 und DIN 18533 !







Hölzer lt. Statik
Wärmeschutz nach
DIN/EGG

GEBÄUDEKLASSE 3



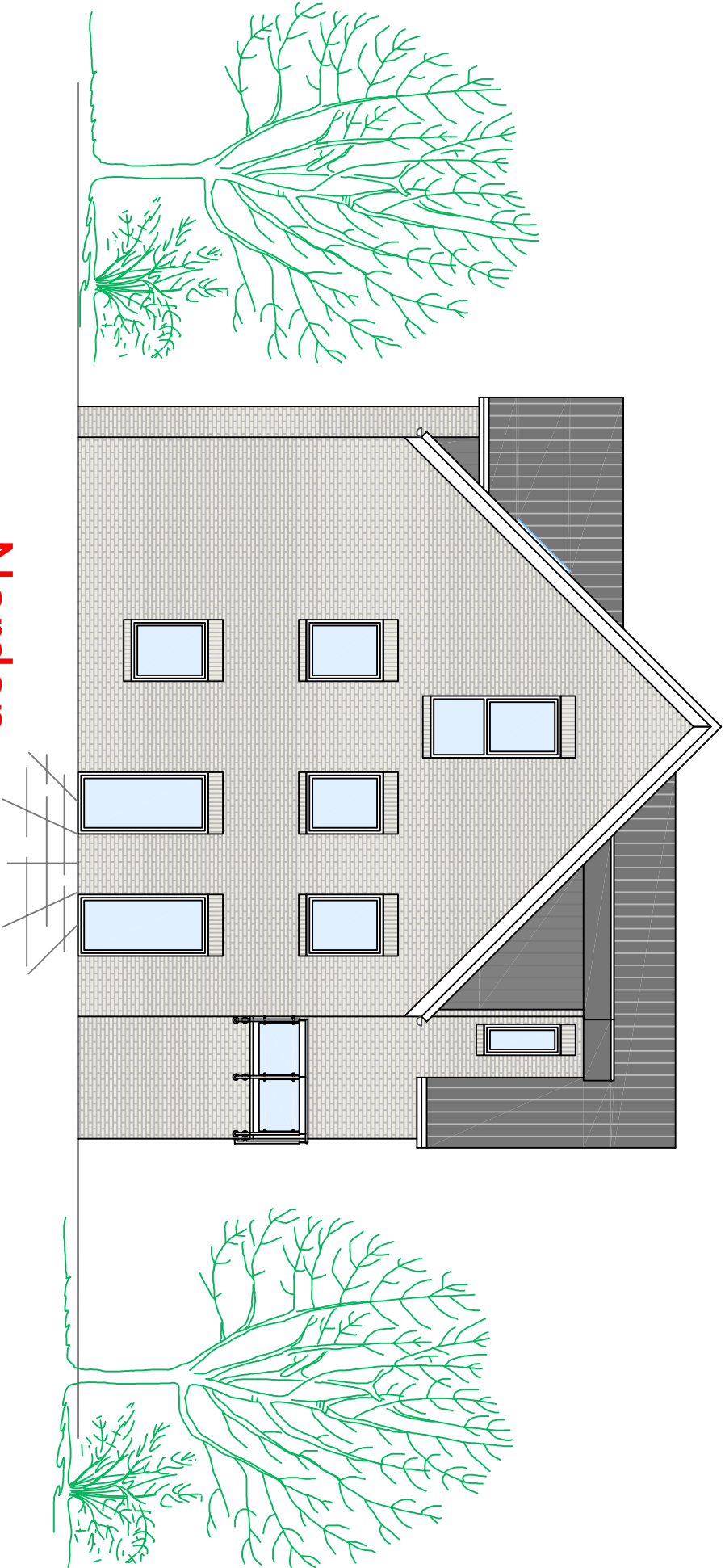
SCHNITT C-C

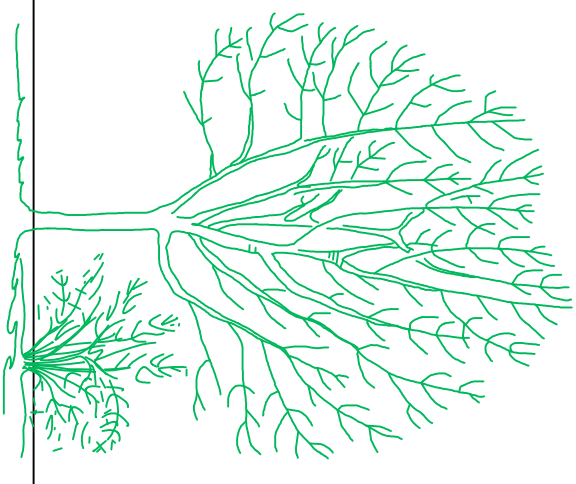
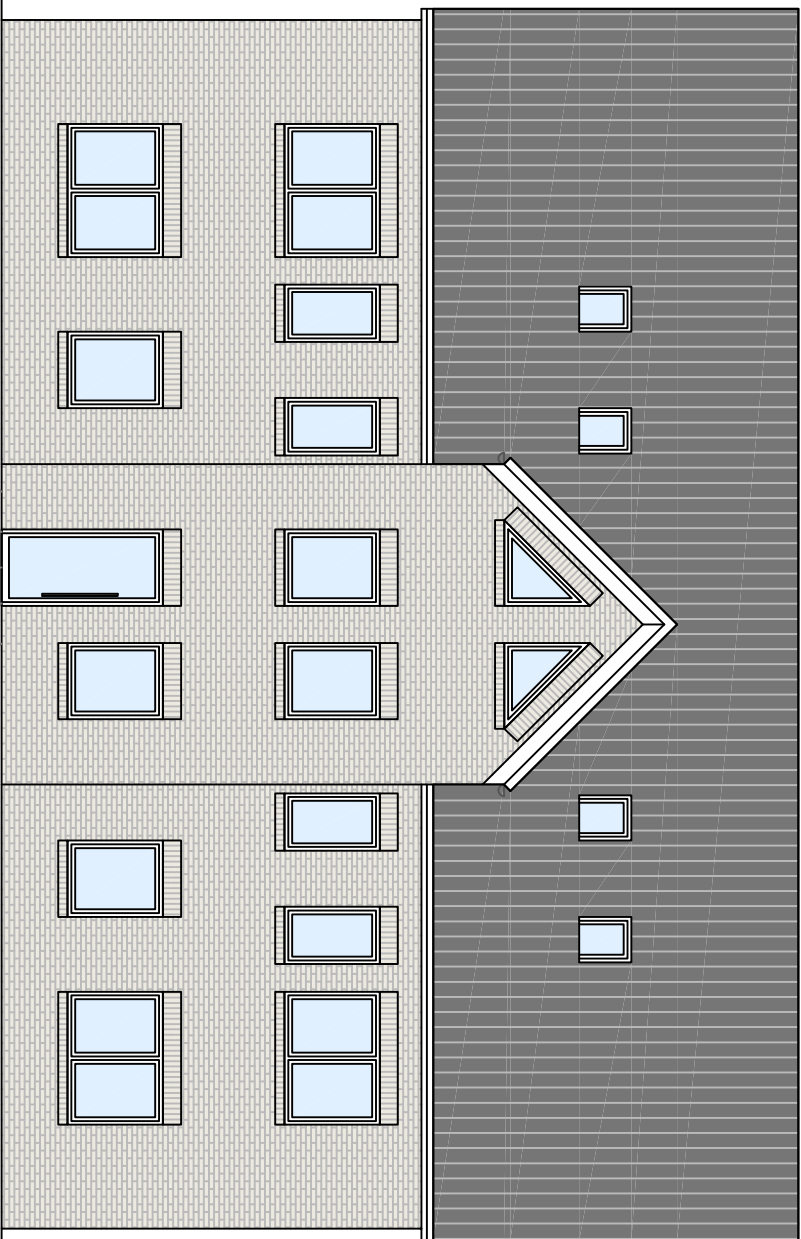
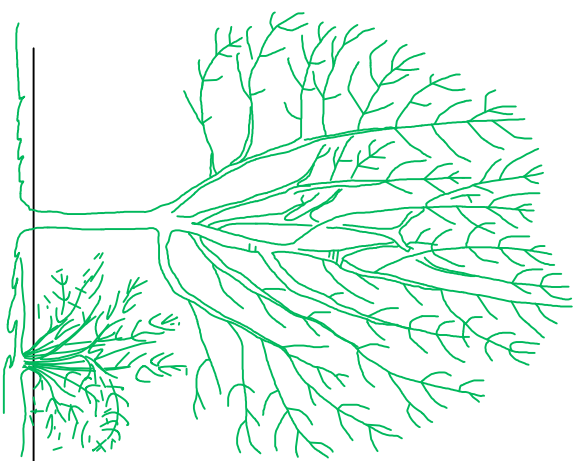
Legende:

-  Holz balkendecke
-  Stahlbeton
-  Verblender
-  Dämmung
-  Porenbeton
-  KSL/KSV

Isolierung gegen aufsteigende Feuchtigkeit
nach DIN EN 1996 und DIN 18533 !

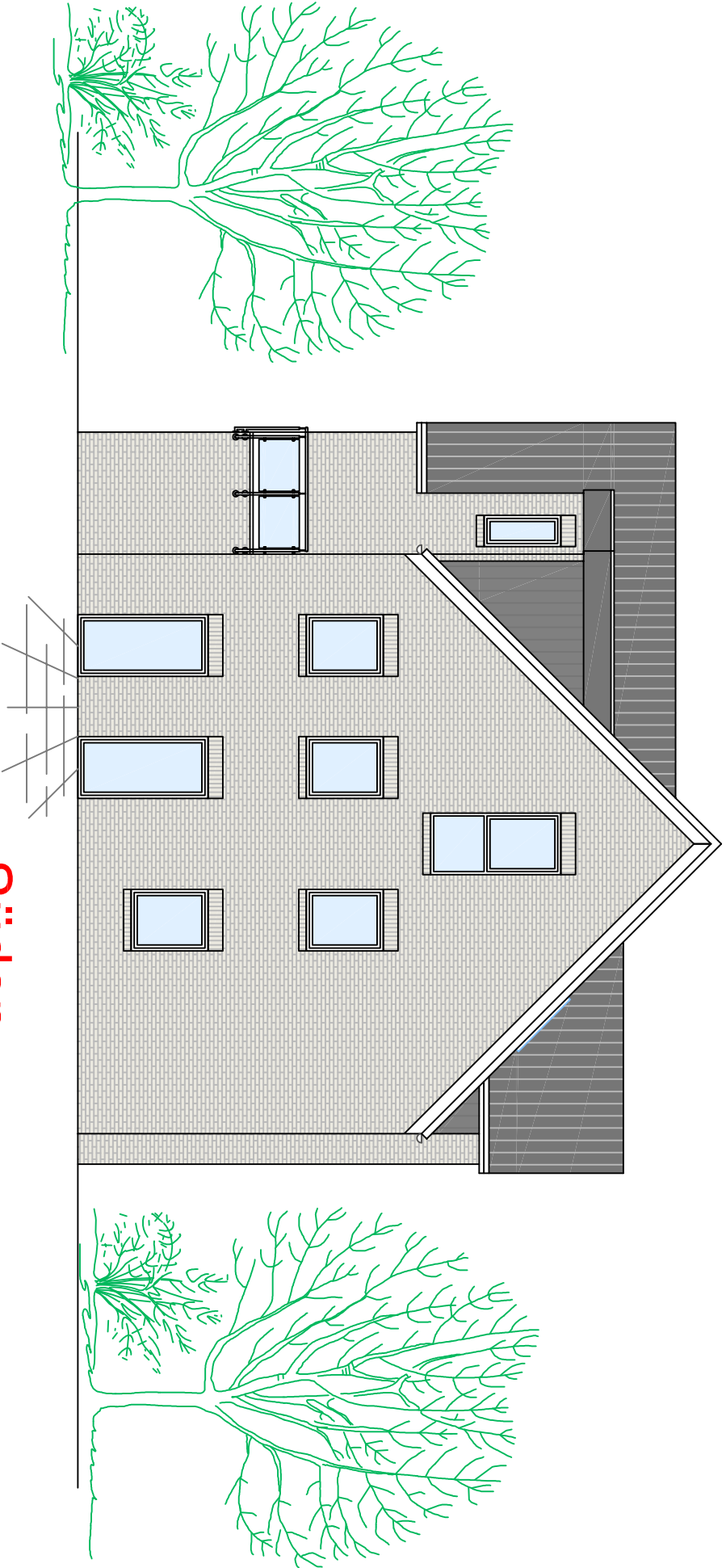
Norden

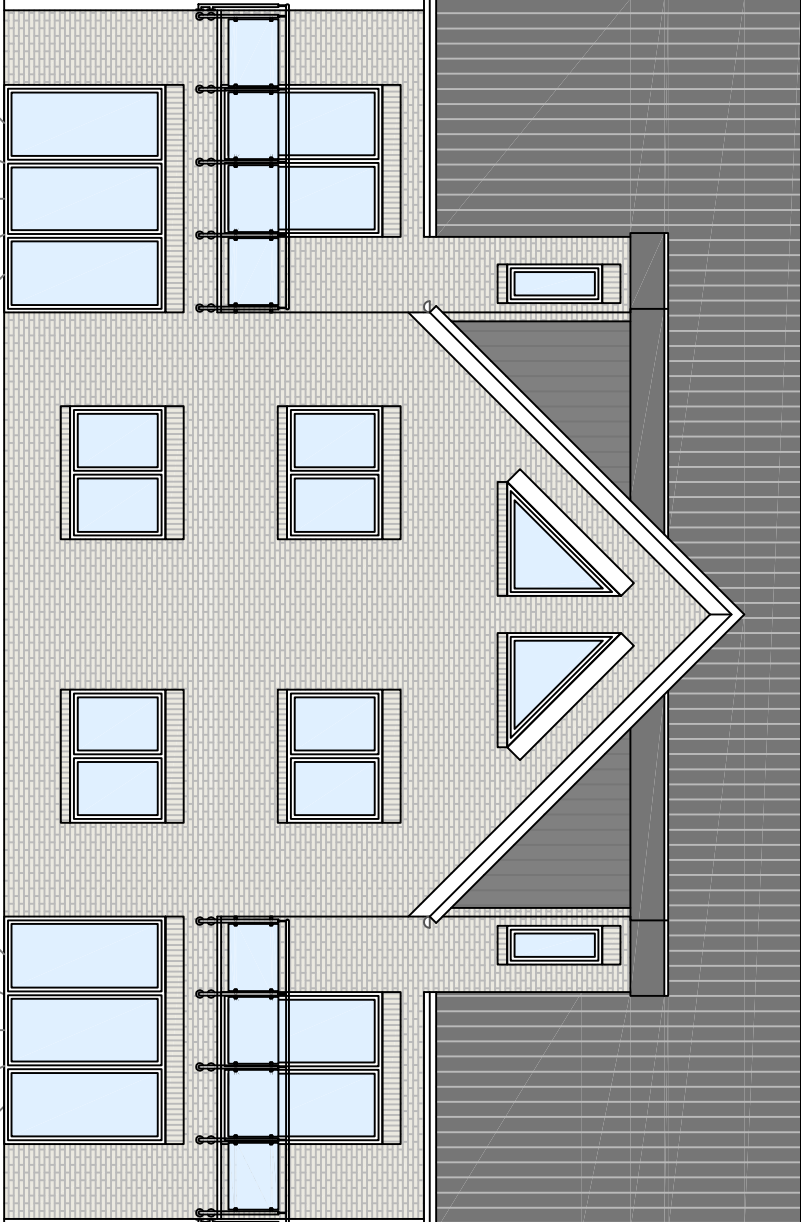




Oten

Süden





Westen

