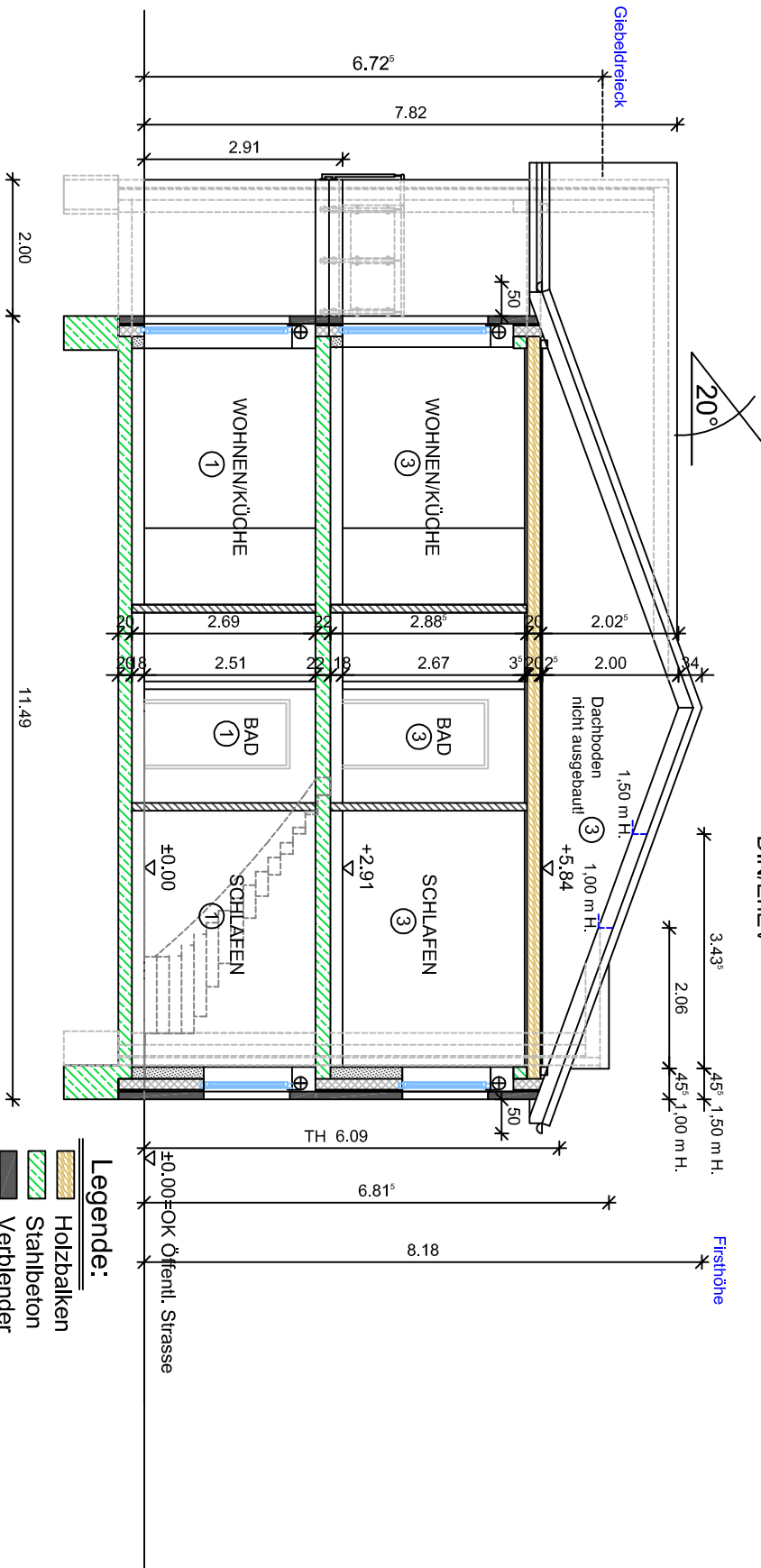


# Dachboden

GEBÄUDEKLASSE 3







Hölzer lt. Statik  
Wärmeschutz nach  
DIN/EnEV

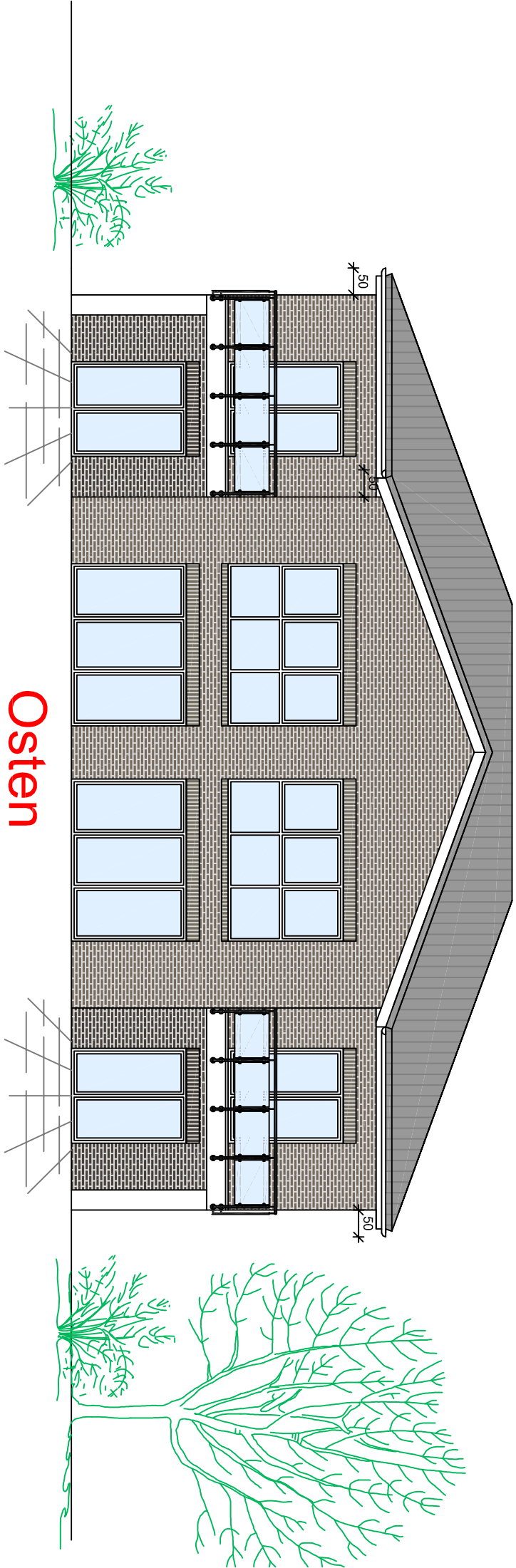


# SCHNITT A-A

Isolierung gegen aufsteigende Feuchtigkeit  
nach DIN EN 1996 und DIN 18533 I

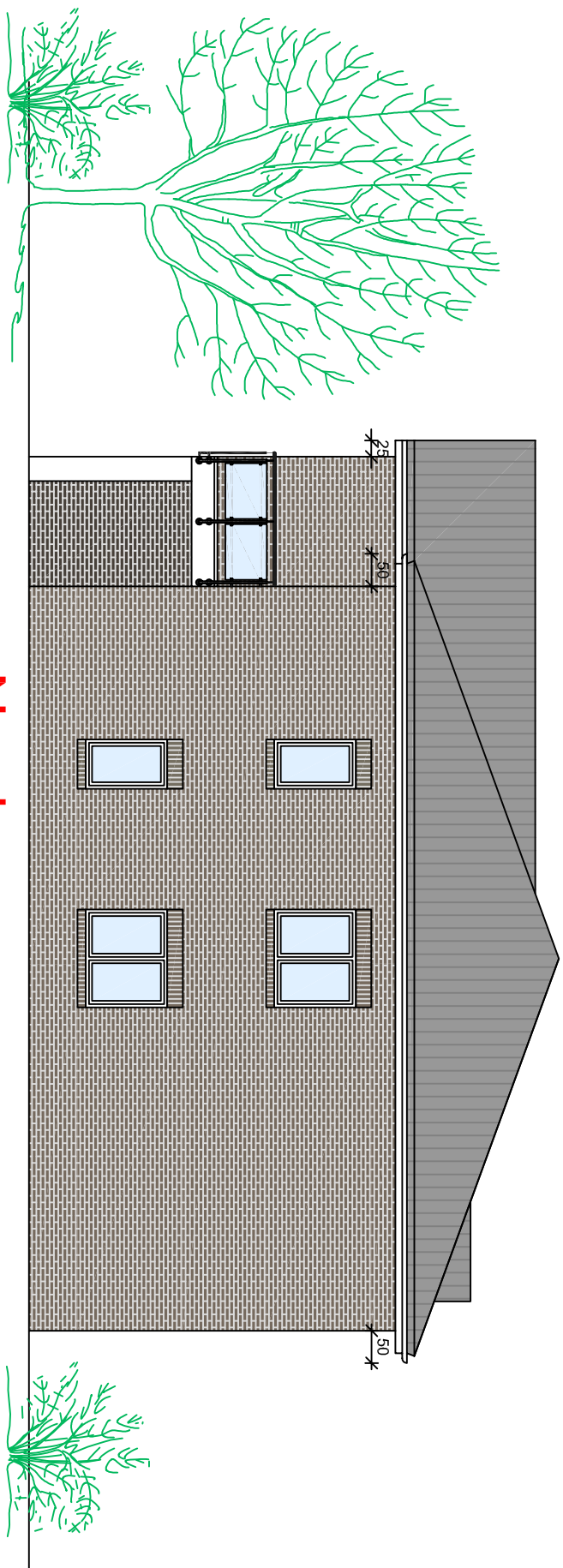
Legende:

-  Holz balken
-  Stahlbeton
-  Verblender
-  Dämmung
-  Porenbeton
-  KSL/KSV

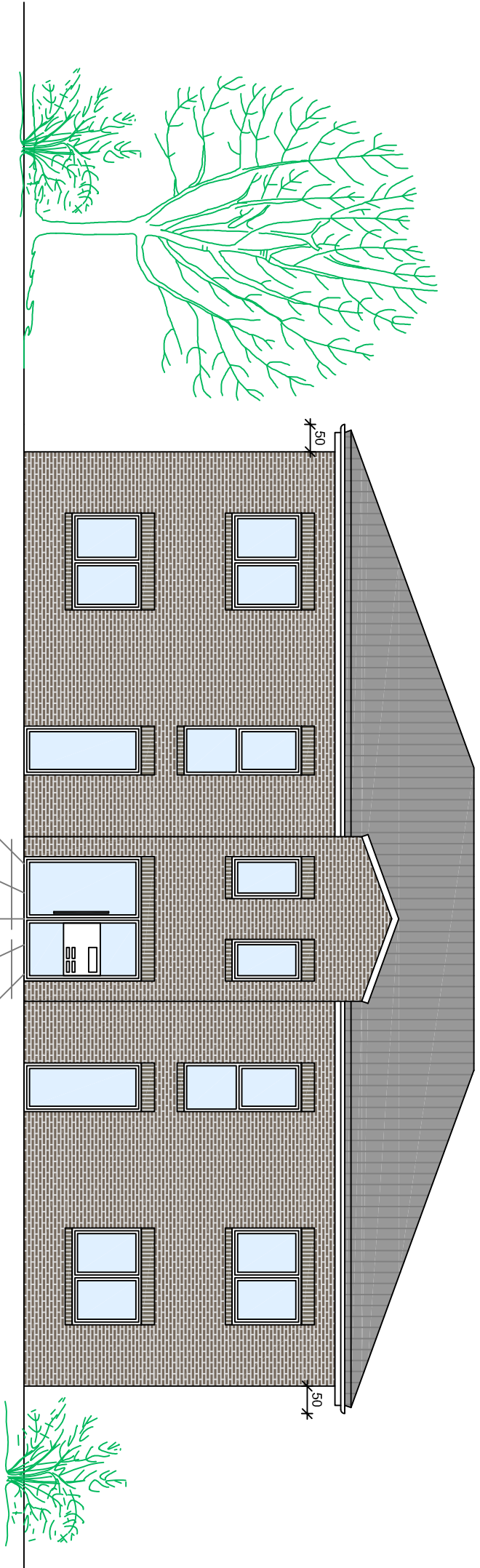


Osten

Norden



Westen



# Süden

