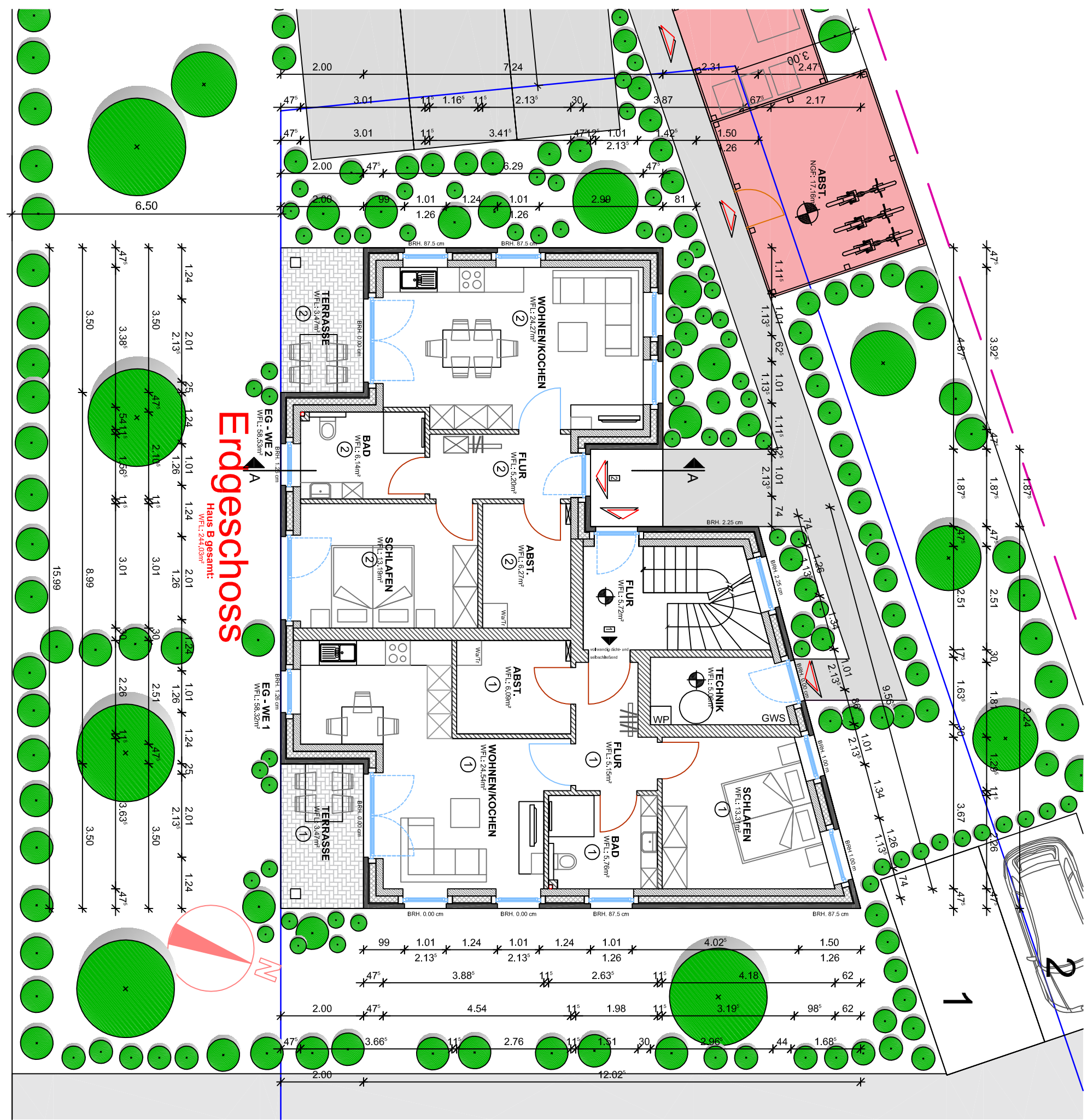


Erdgeschoss

Haus B gesamt:

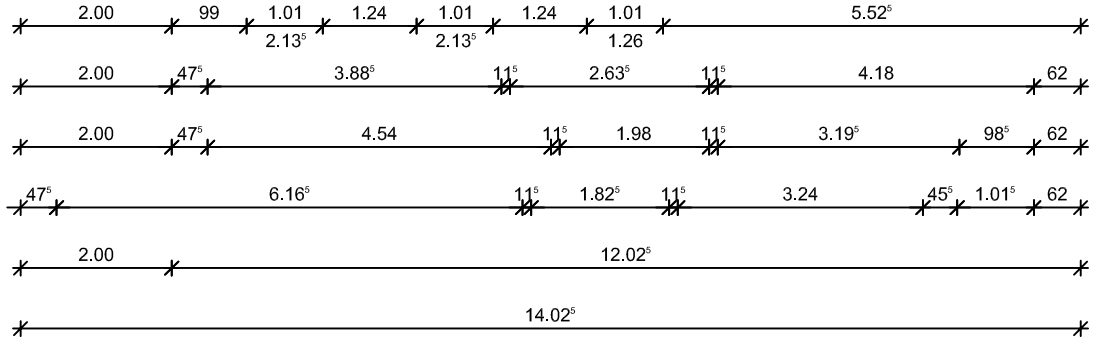
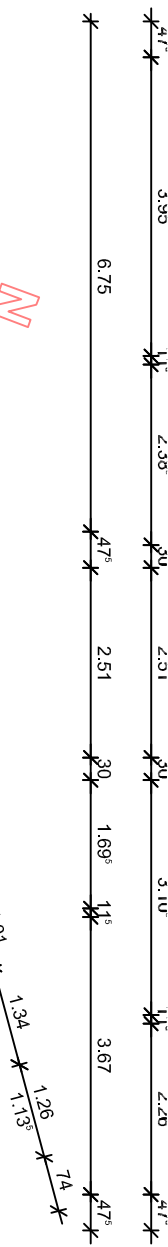
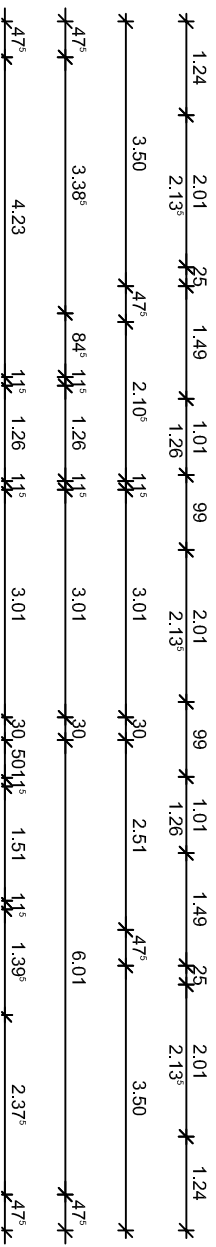
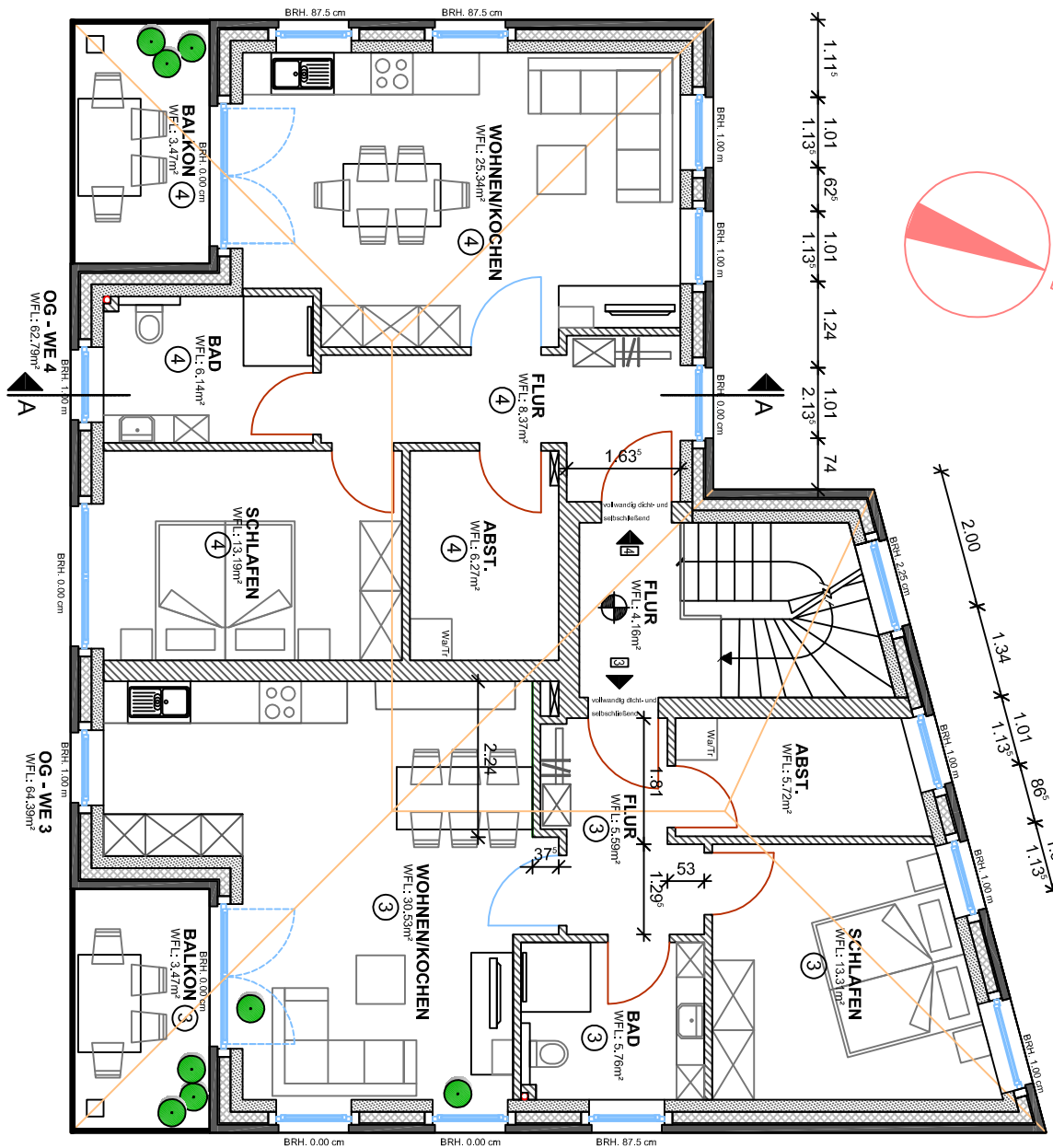
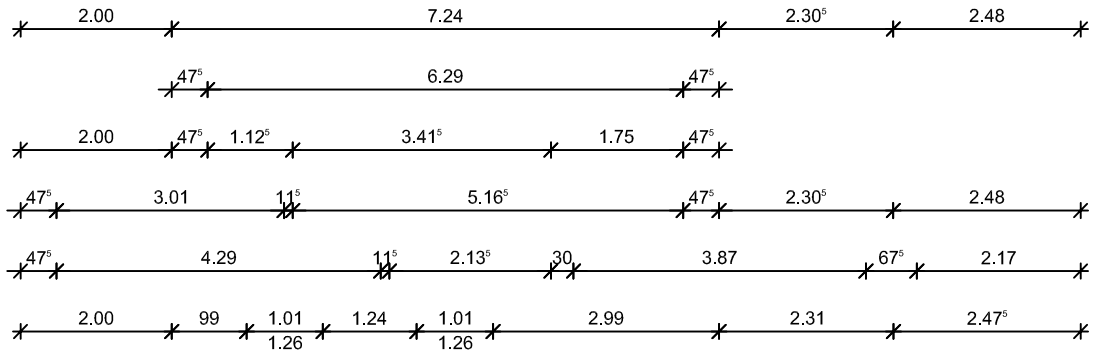
WFL: 244,03m²

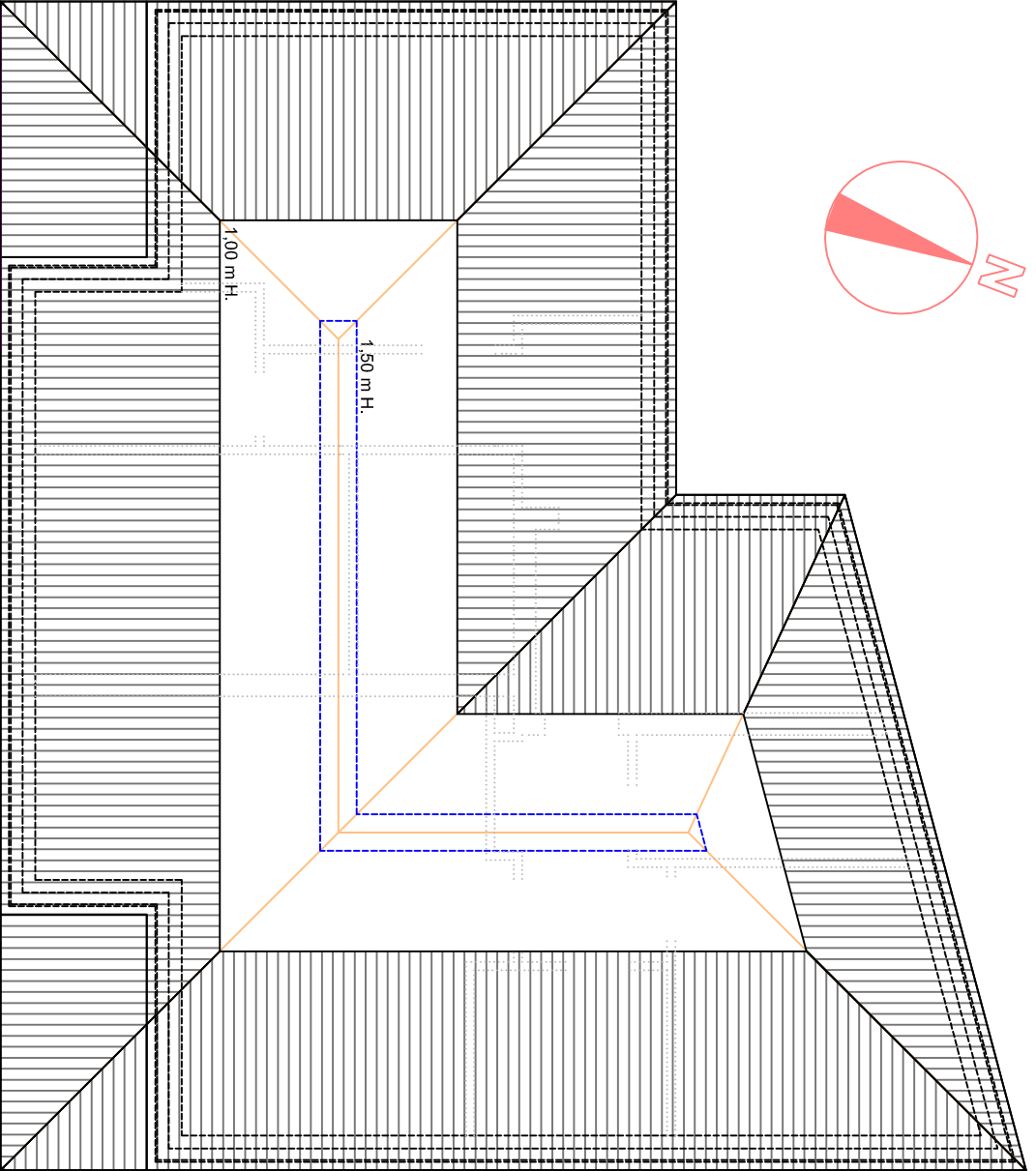
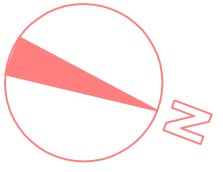


Erdgeschoss

Haus B gesamt:

WFL: 244,03m²

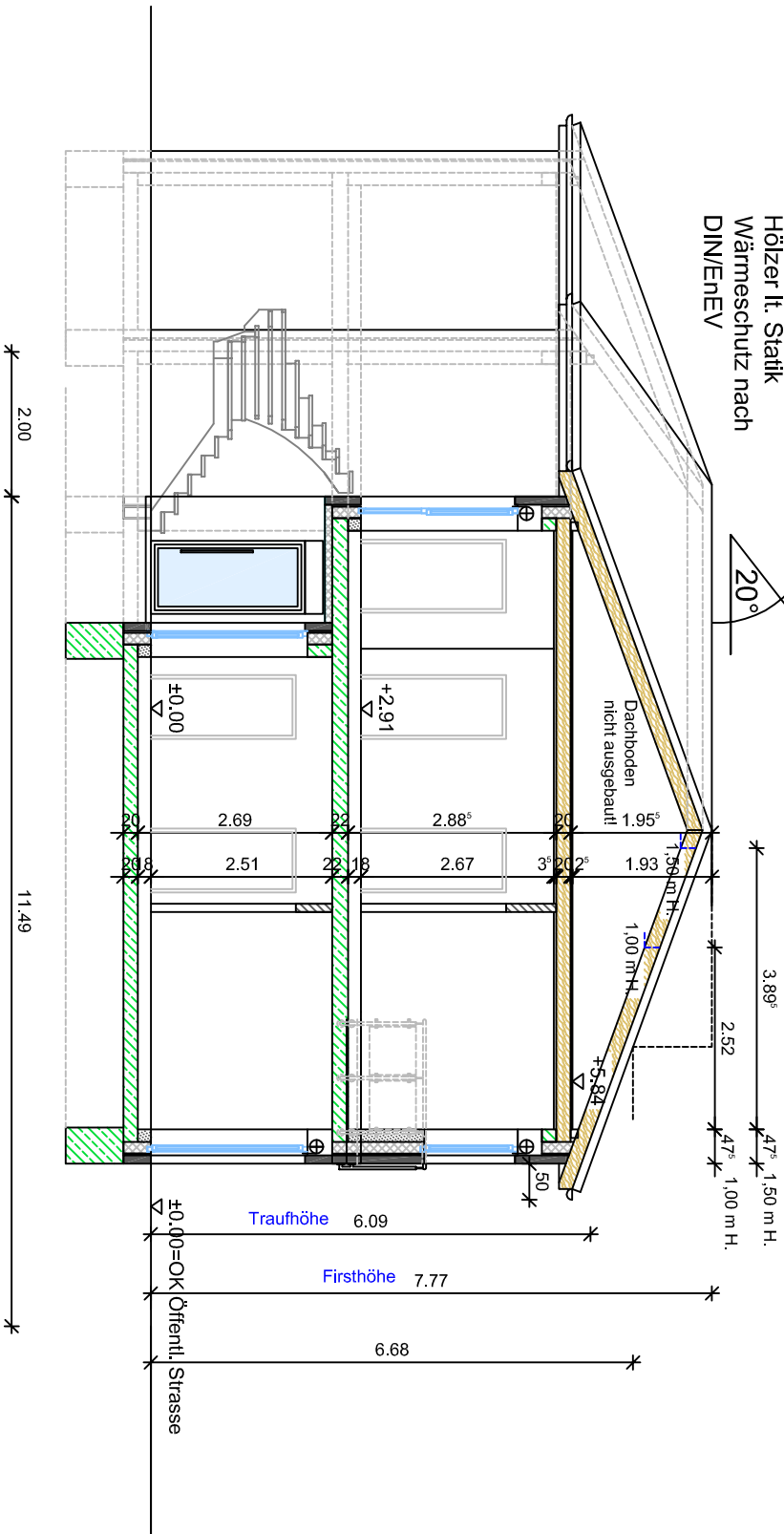
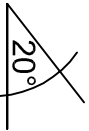




Dachboden

GEBÄUDEKLASSE 3

Hölzer lt. Statik
Wärmeschutz nach
DIN/EnEV



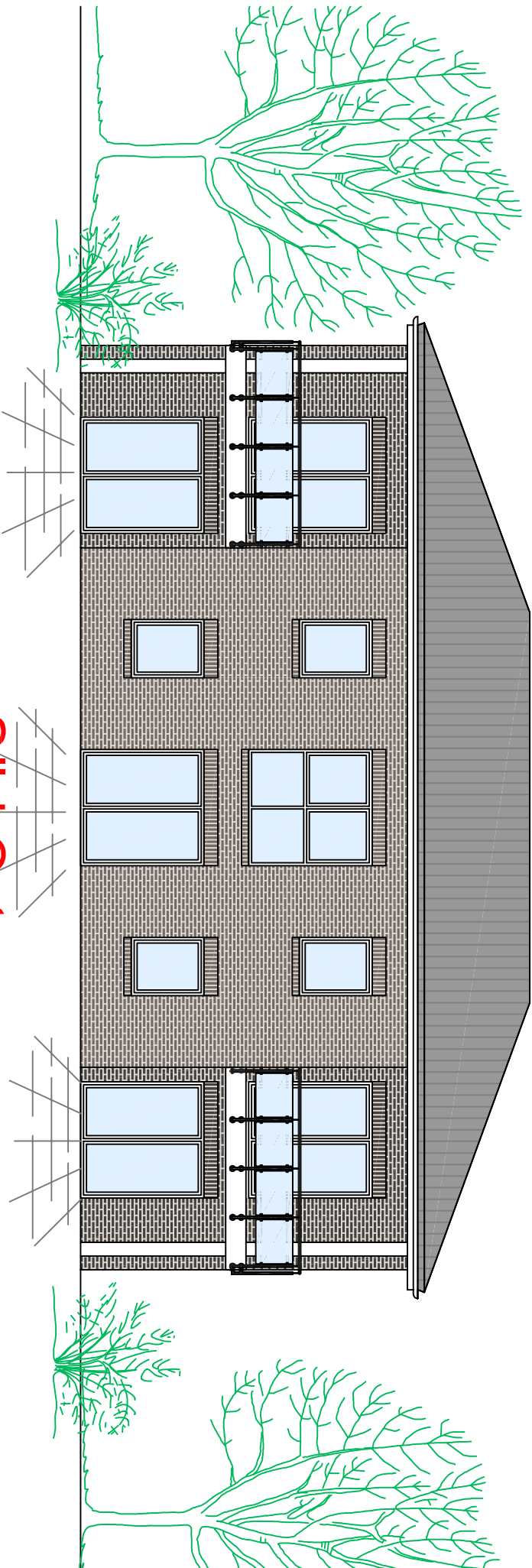
SCHNITT A-A

Isolierung gegen aufsteigende Feuchtigkeit
nach DIN EN 1996 und DIN 18533 !

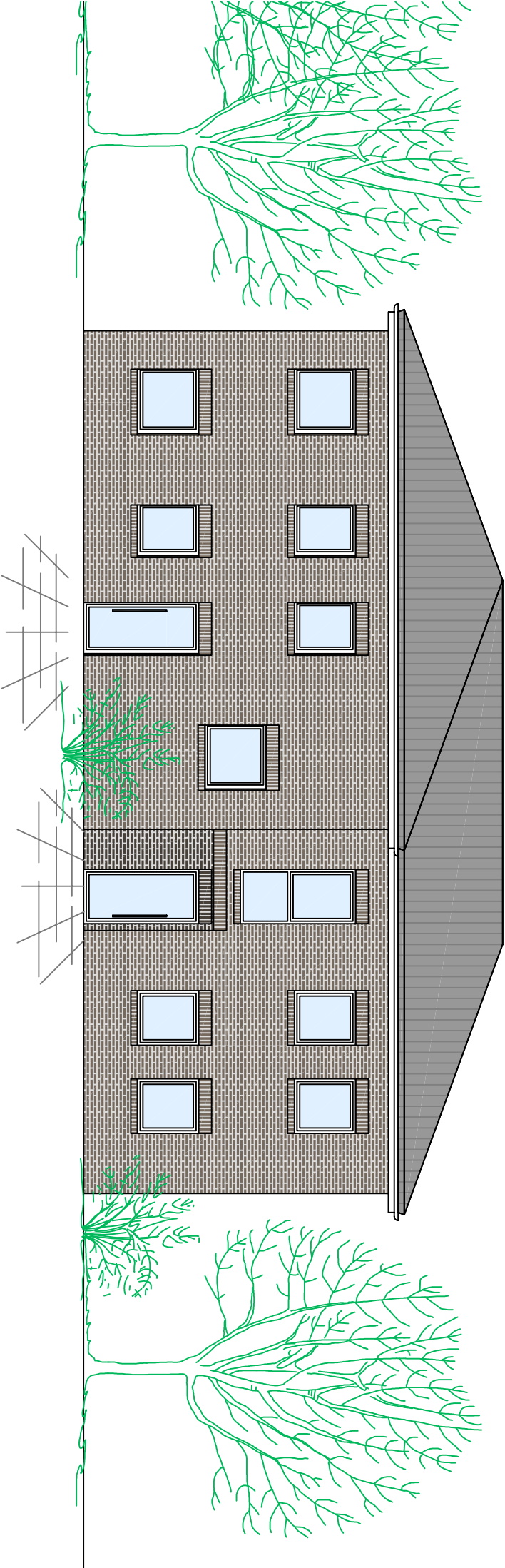
Legende:

- Holz balken
- Stahlbeton
- Verblender
- Dämmung
- Porenbeton
- KSL/KSV

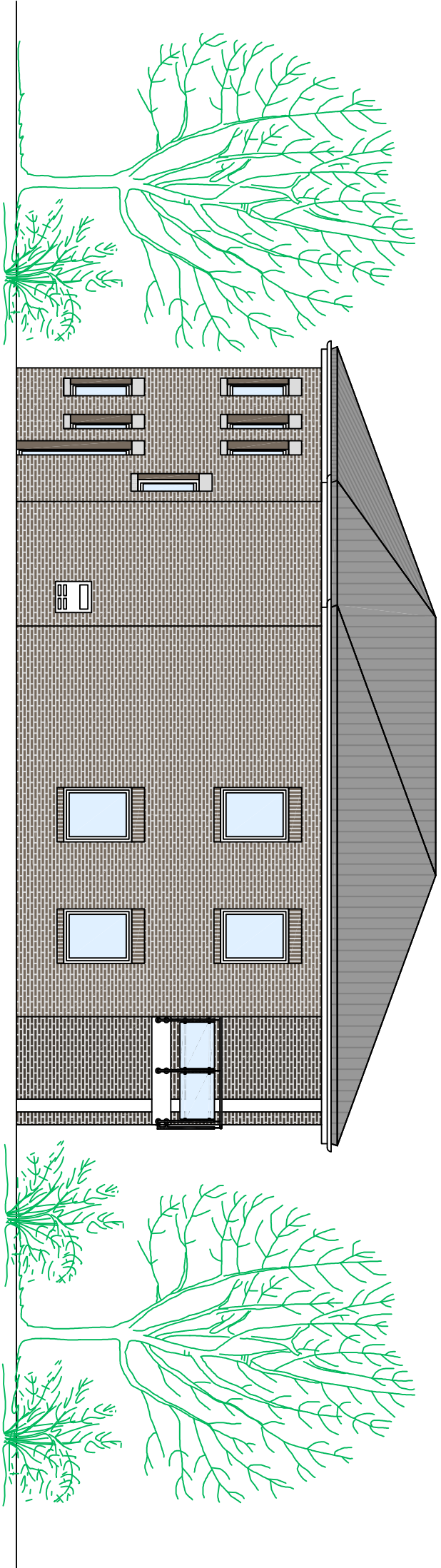
Süd-Osten

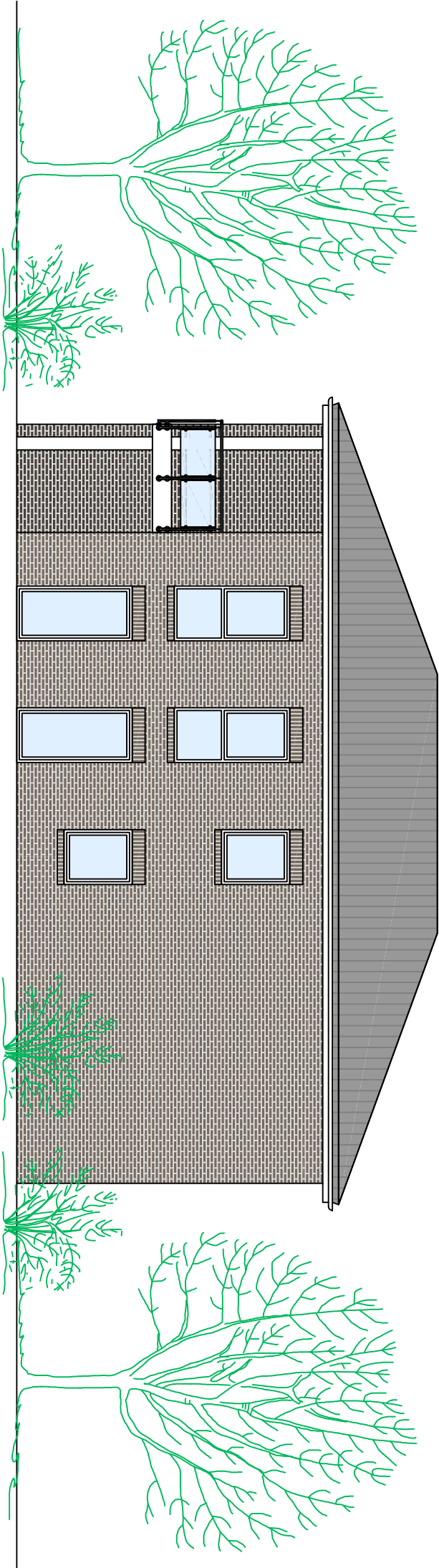


Nord-Westen



Süd-Westen





Nord-Osten